



**Healthy**  
Land & Water

**Building  
tomorrow's  
resilient landscapes  
today**

---



## End-to-end environmental solutions, from strategy to implementation

---

Healthy Land & Water is South East Queensland's leading independent environmental organisation, **transforming science into action to protect natural assets, build climate resilience, and deliver measurable sustainability outcomes through innovative solutions and hands-on management** for over 25 years.

We partner with governments, Traditional Owners, businesses, and communities to drive environmental and social change in **one of the world's most biodiverse regions**, leveraging impact investments that benefit ecosystems, communities, and economies. South East Queensland is home to **59,000 ha of UNESCO World Heritage-listed Gondwana Rainforests**, to the **internationally significant Moreton Bay Ramsar wetland**, an **array of biodiversity species and critical habitat corridors** supporting threatened species.

**Our mission:** To be recognised regionally and globally for our innovative pathways that deliver positive environmental benefits.

Your **strategic partner** in turning environmental commitments into **measurable outcomes**, backed by science and proven results.



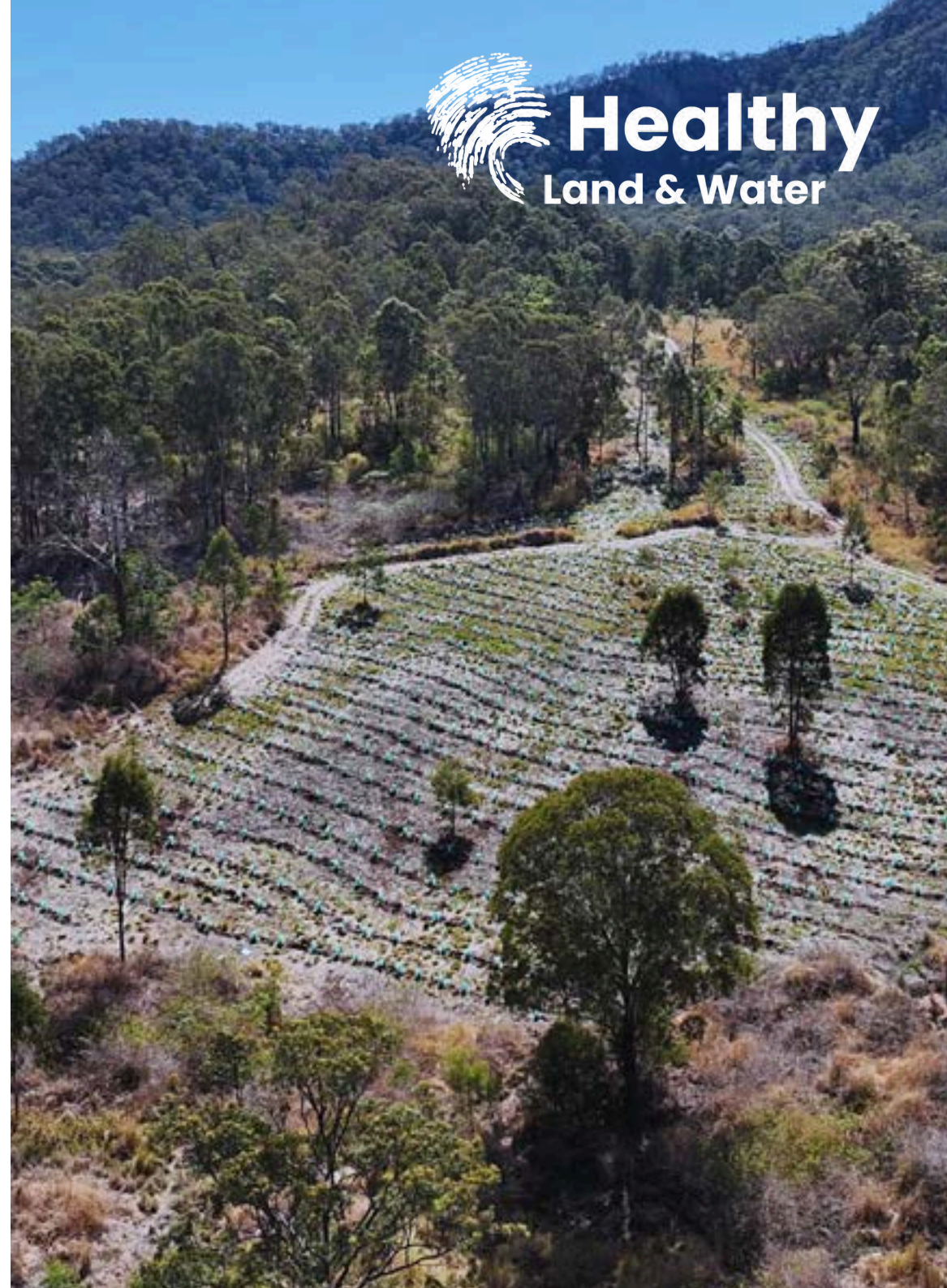
# Delivering on your sustainability commitments and beyond

Our work addresses the complex environmental challenges facing South East Queensland through an integrated approach that combines:

- **Scientific expertise** across environmental science, engineering, and research.
- **On-ground delivery** with proven project management and implementation.
- **Strategic partnerships** with Traditional Owners, governments, and industry leaders.
- **Measurable outcomes** aligned with ESG commitments and sustainability goals.

**Our solutions address multiple outcomes simultaneously** - boosting biodiversity, strengthening ecosystem resilience, improving waterways' health, preserving cultural landscapes, promoting sustainable agricultural practices, engaging and preparing communities for natural disasters, and restoring natural habitat.

## We deliver across 5 strategic themes



# Our targeted solutions & programs

Our approach goes beyond traditional environmental management. We create integrated, nature-positive investment solutions that address the complex challenges.

## Ecosystem restoration & biodiversity conservation

Restore and maintain critical ecosystems to preserve ecological functions, protect threatened species, and enhance resilience to environmental changes.

## Sustainable agriculture & land management

Boost agricultural productivity, profitability, and resilience through best practices and capacity building, helping landholders implement sustainable practices that improve soil health, reduce environmental impact, and build climate resilience.

## Climate resilience & adaptation

Build community and landscape resilience to climate impacts including fire, flood, and drought through disaster preparedness training, climate-smart strategies, fire management planning, and community capacity building for natural disaster response.

## Water quality & catchment management

Restore and protect waterways, improve water quality, and manage catchments through integrated solutions, including streambank restoration, erosion control, pollution reduction, landscape rehydration, and comprehensive catchment planning.

## Indigenous partnerships & reconciliation

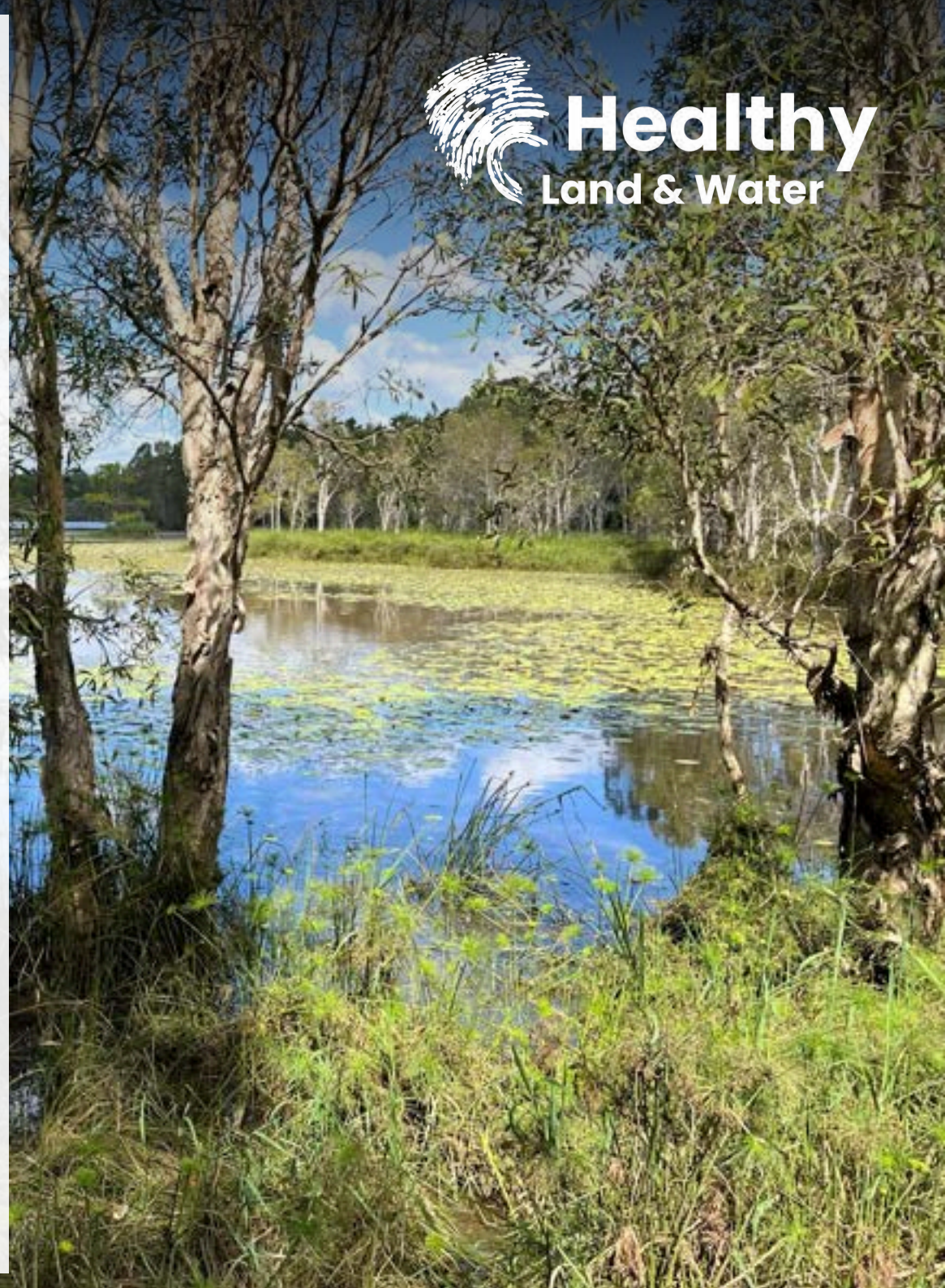
Collaborate with Traditional Owners in planning and decision-making to ensure sustainable natural resource management and advance reconciliation through meaningful partnerships.

## Environmental monitoring & research

Comprehensive environmental monitoring using advanced technologies, including GIS mapping, remote sensing, and data management to provide evidence-based assessment of terrestrial, marine and freshwater ecosystems for informed decision-making and measurable impact demonstration.

## Landscape-scale investment solutions

Our pioneering ENVestor program drives large-scale natural capital investments through habitat restoration and regenerative farming, helping investors meet ESG commitments while enhancing biodiversity, climate resilience, and community wellbeing.



## **Our partnership approach**

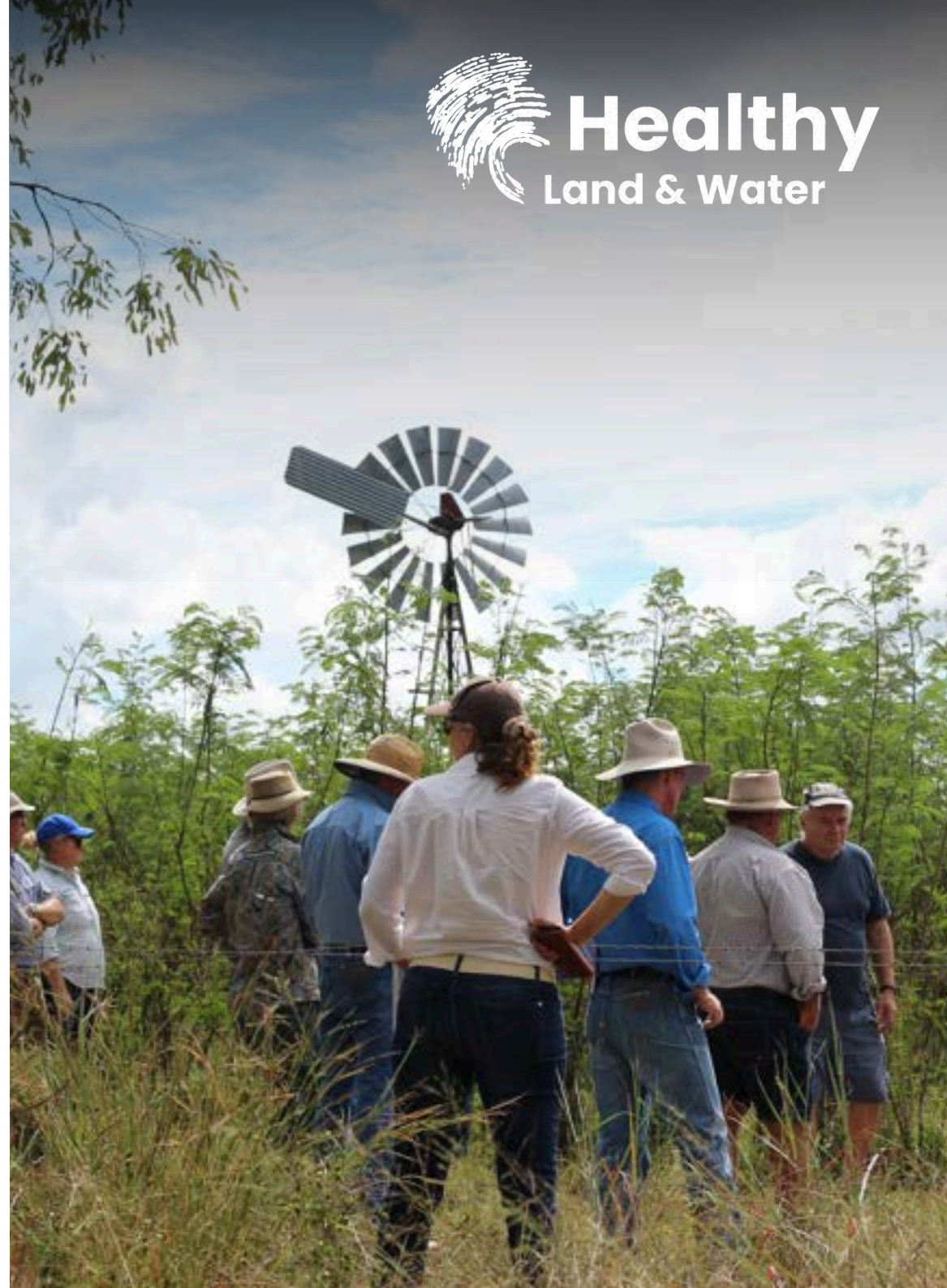
**Co-design solutions** We collaborate with you to understand your environmental challenges and ESG goals, developing tailored strategies that align with your objectives.

**Integrated delivery** Our multidisciplinary team manages all project phases from strategy through implementation, monitoring, and adaptive management.

**Measurable impact** Regular reporting with data-driven insights demonstrates ROI and environmental outcomes for stakeholder confidence.

**Investment-ready pipeline** through our ENVestor program spanning habitat restoration, regenerative farming, and carbon projects

**Collaborative. Strategic. Results-focused.**



## Proven results FY2024-25 at a glance

As a regional leader with global responsibility, we are grounded in the landscapes, communities, and science of South East Queensland, and guided by transparent governance that ensures our decisions are transparent, **our risks are managed, and our outcomes are trusted.**

We align our place-based approach with global frameworks, including the UN Sustainable Development Goals and Science-Based Targets for nature and climate.

**Our work contributes to addressing both local environmental challenges and planetary boundary pressures** through projects ranging from riparian restoration and nutrient offsets to carbon neutrality planning and circular economy pilots.



**>900 ha grazing management & improved land practices**



**>2,000 ha Transformed** through our programs



**75 Active programs & >5,600 landholders engaged**



**>1,000 ha Weed control and maintenance**



**>36 ha Revegetated riverbanks & riparian works**



**>50 km waterways restored**



**>87 ha revegetation/ assisted regeneration completed**



**>72,000 Biological control agents released**



**>400 sites monitored for ecosystem health report cards**



**>200 ha habitat improved for koalas**

# Why choose Healthy Land & Water

---

## Proven track record

25+ years of experience delivering end-to-end environmental solutions in one of the world's most biodiverse regions, with measurable triple-bottom-line outcomes and investment returns.

## Integrated expertise

Multidisciplinary team spanning environmental science, engineering, sustainable agriculture, ecological restoration, stakeholder engagement, and research - enabling comprehensive project delivery.

## Strategic partnerships

Leverage our established relationships with the region's biggest stakeholders, Traditional Owners, governments, and industry leaders to amplify project impact and ensure sustainable outcomes.

## Science-based solutions

20+ years of environmental monitoring and research expertise ensures our solutions are evidence-based, adaptive, and aligned with best practice standards.

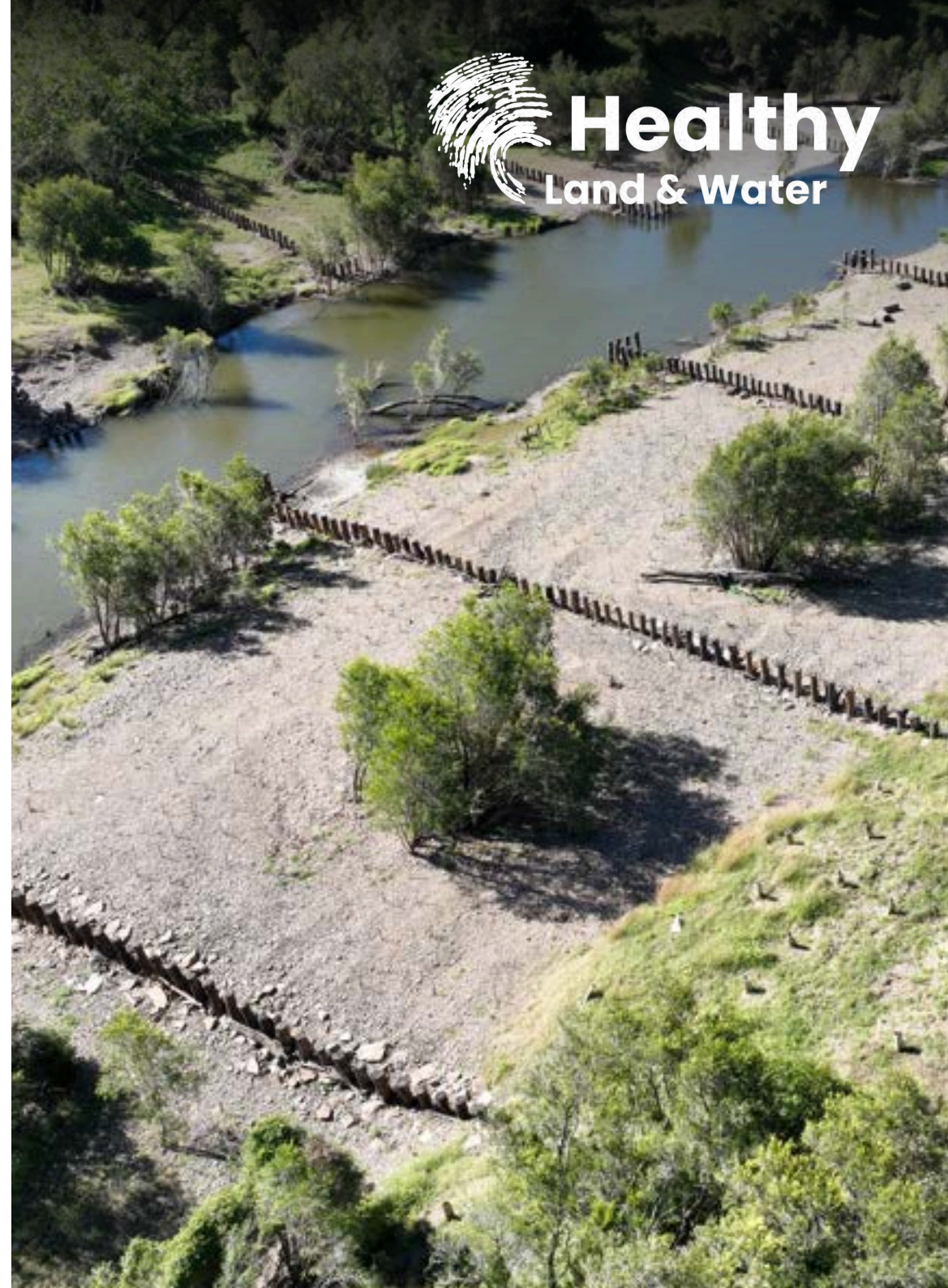
## Investment-ready delivery

Positioned as your strategic delivery partner in advancing the transition to net-zero, environmentally positive, and resilient futures that meet ESG requirements and sustainability commitments.

## Our team expertise

---

- Environmental science and ecology specialists.
- Engineering and sustainable infrastructure experts.
- Sustainable agriculture and land management professionals.
- Ecological restoration and habitat specialists.
- Indigenous engagement and reconciliation practitioners.
- Community engagement and stakeholder management.
- Research, monitoring and data analysis experts.
- Strategic communication and marketing professionals.



Let's build resilient  
landscapes  
**together**



## Ready to transform your environmental commitments into action?

Contact us to discuss strategic collaboration or learn how we can support your ESG goals, scope, timeline, and outcomes.

Get in contact with us

**Jørgen Schmidt** - Manager Partnerships

[jorgen.s@hlw.org.au](mailto:jorgen.s@hlw.org.au)

0456 743 762

**Lachlan Storie** - Partnerships Manager

[lachlan.s@hlw.org.au](mailto:lachlan.s@hlw.org.au)

0476 201 342

**Pat Lewis** - Partnerships Manager

[pat.l@hlw.org.au](mailto:pat.l@hlw.org.au)

0448 737 522

**Ross Bigwood** - Business Development Manager

[ross.b@hlw.org.au](mailto:ross.b@hlw.org.au)

0438 162 113